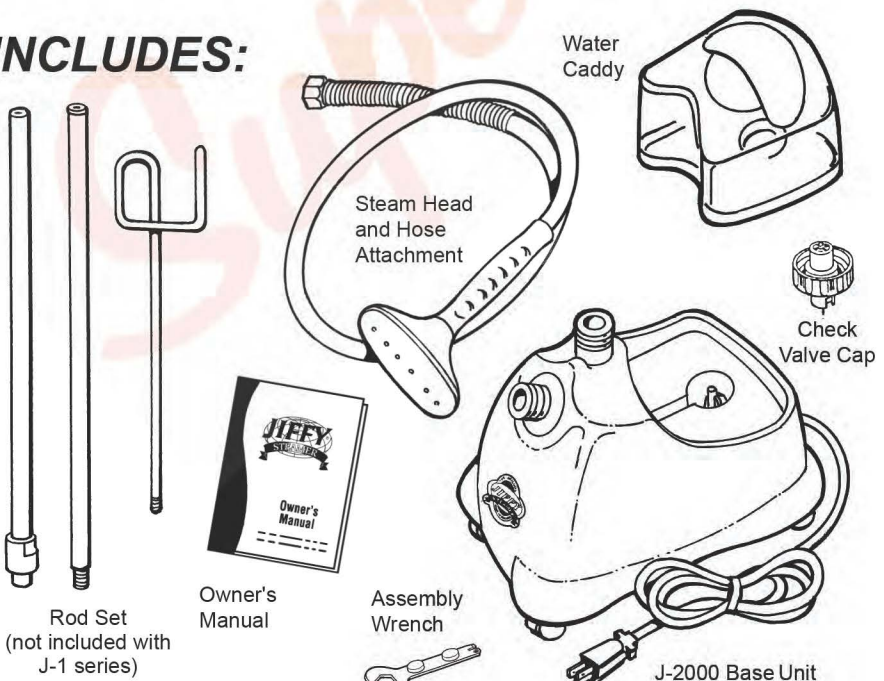


Jiffy® J-2000 Model Steamer

FEATURES

- Polymer outer housing unit for durability
- Lightweight, flexible hose
- Shatterproof water caddy
- Safety wiring feature temporarily turns the unit off should it accidentally run dry
- Comfortable, easy-to-grip handle
- Removes wrinkles up to five times faster than conventional ironing
- Easy-roll casters for mobility
- Numerous steam head attachments available
- Backed by Jiffy®'s renowned Customer Service--*should your steamer need repair, send it to us and we will repair and ship the unit within 24 hours from its arrival to our plant*

INCLUDES:



Jiffy® J-2000 Directions

1. Attach hose firmly with included assembly wrench, which is magnetized and located on the bottom of the unit. Assemble and attach hose hanger rod set. See page 9 for assembly instructions.
2. Invert water caddy filled with distilled or tap water, plug into proper voltage outlet, turn switch to lighted ON position and you will have steam within minutes. Never substitute the Jiffy® Steamer water caddy.



Figure 1

3. For easy operation, mount optional Jiffy® Steamboard to door or wall to hold clothing while steaming (figure #2). For hanging garments without optional Jiffy® Steamboard, simply install an eye screw or nail to inside of a doorway or directly onto a wall or you may use your steamer's rod set as shown in figure 3. Touch material lightly with steaming head and wrinkles will vanish instantly. The combined touch of the steaming head and the direct steam is very important. Some articles can be steamed better from the underneath side. Speed and efficiency is accomplished with a little practice. Always steam with hose in an upright position, so any condensation is free to flow back into steamer. If steaming in a low position near floor, straighten hose up and out frequently to keep clear of condensation. **DO NOT ALLOW STEAMER TO RUN DRY.**



Figure 2

4. Hang steam head in an upright position in the hose hanger section when not in use and turn switch to OFF (figure #3).
5. Periodically, pour old water out of steamer to avoid sediment buildup and maintain proper water level (figure #4). Remove hard water deposits with Jiffy® Liquid Cleaner. Wipe water cup out with a hand towel. See page 28 for complete cleaning instructions.

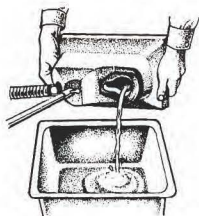


Figure 4

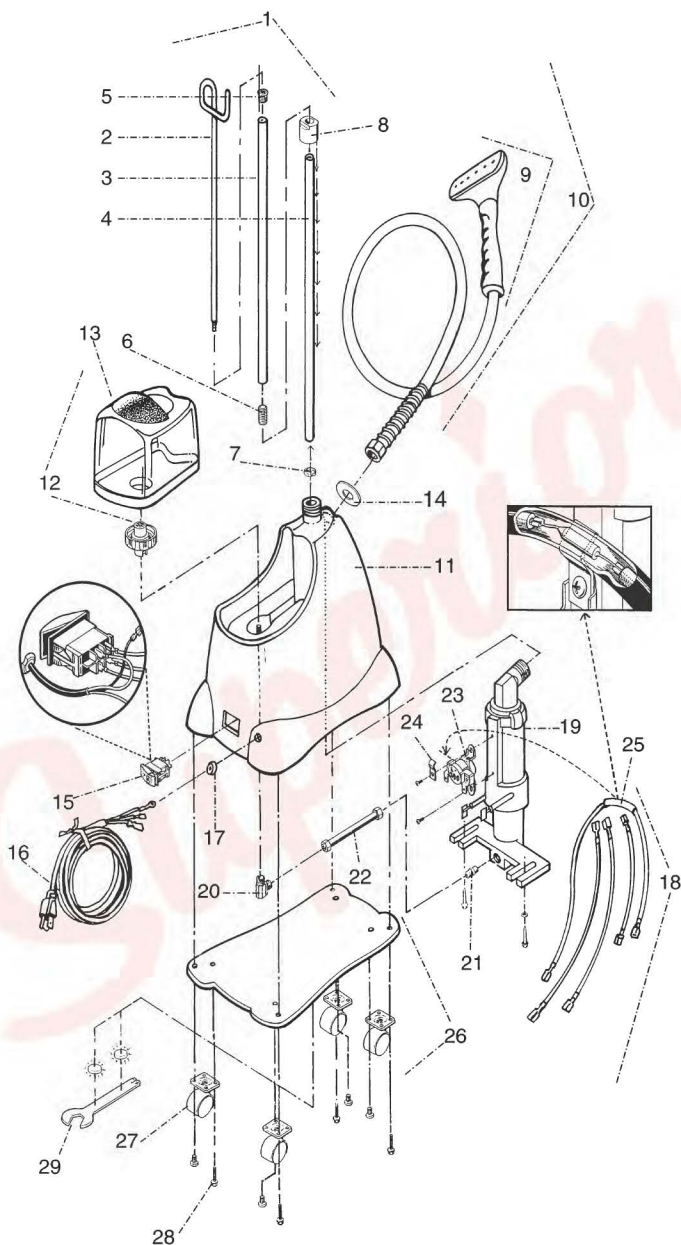


Figure 3

NOTE: No two water supplies have the same mineral content. If your steamer begins to cut on and off during normal use, the thermostat is indicating the heating unit needs the sediment cleaned out.

J-2000

Jiffy® J-2000 Parts Diagram



Should you ever need replacement parts for your Jiffy® Steamer, you may purchase them separately. Use this handy diagram and parts list to identify any part you may need. Please include model and serial number when ordering.

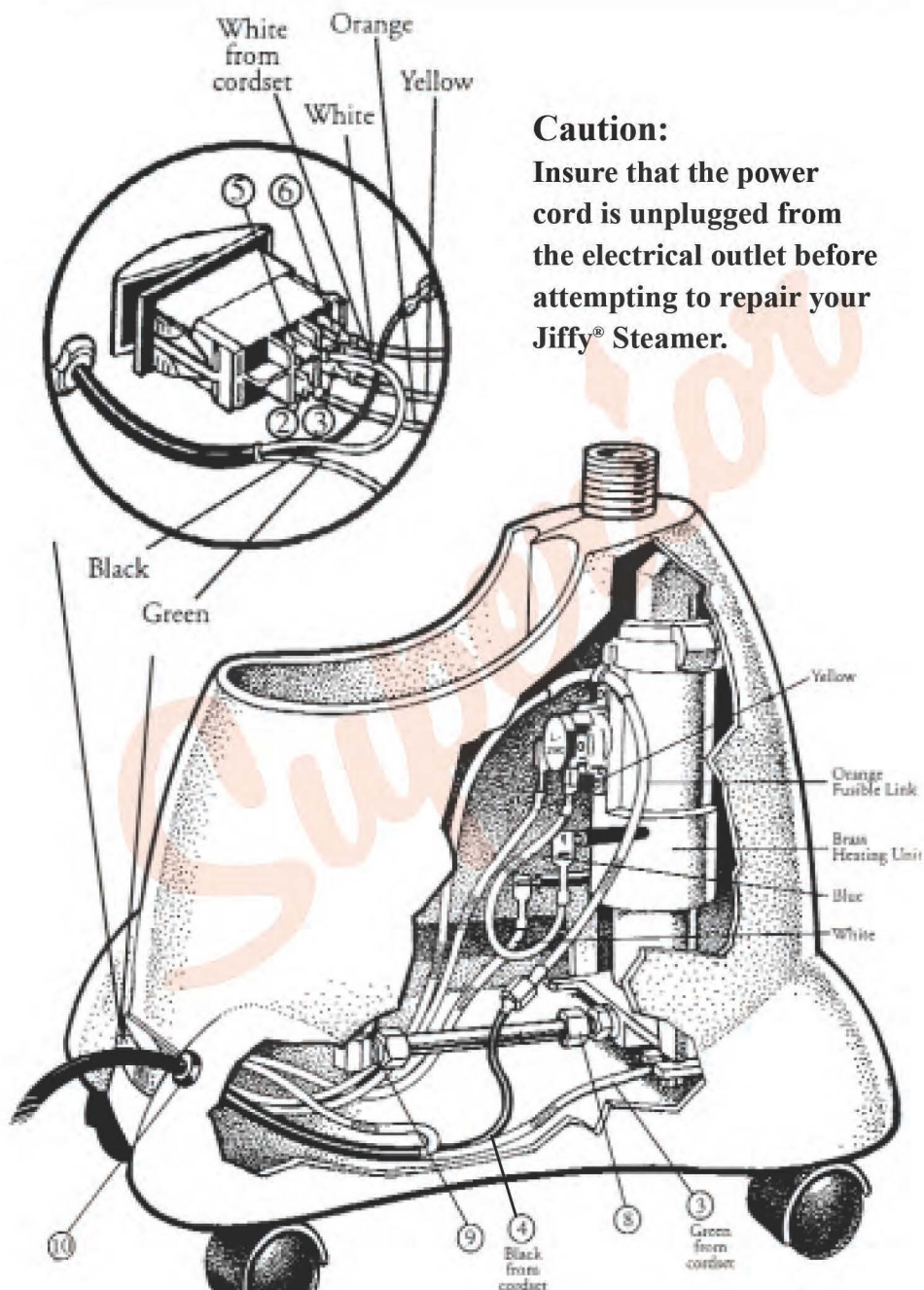
From the library of: Superior Sewing Machine & Supply LLC

Jiffy® J-2000 Parts Diagram Key

Jiffy Steamer			List Price
Key#	Part #	Part Description	
1	1030	Rod Set and Nut Complete with Metal Studs	\$ 25.50
2	0035	Hook Section of Rod Set	\$ 6.50
3	0036	Middle Section of Rod Set	\$ 7.50
4	0037	Bottom Section of Rod Set	\$ 7.50
5	0043	Metal Threaded Cap Screw for Rod Set	\$ 1.50
6	0039	Metal Threaded Stud for Rod Sections	\$ 1.50
7	1031	1/2" Split Ring for Rod Set	\$ 0.50
8	1032	Rod Set Nut	\$ 6.00
9	0253	Plastic Steam Head/Handle Replacement Kit	\$ 22.00
10	0251	Plastic Head/Handle Hose Attachment Complete	\$ 50.00
	0280	Hose Per Foot (Black in Color)	\$ 3.00
11	1100	J-2000 Plastic Housing Kit	\$ 58.00
12	1140	J-2000 Water Caddy Complete with Check Valve Cap	\$ 28.00
13	1141	J-2000 Water Caddy Complete with out Check Valve Cap	\$ 24.25
	0027A	Replacement Check Valve Cap	\$ 3.75
14	0004	Round Beauty Ring	\$ 0.75
15	1125	Green Lighted Contura Rocker Switch - 120 Volt	\$ 9.00
	1126	Green Lighted Contura Rocker Switch - 230 Volt	\$ 9.00
16	0132	Cord Set (16/3 gauge) with Strain Relief	\$ 9.50
17	0146B	Cord Strain Relief	\$ 1.50
18	0148	Internal Wire Set	\$ 9.00
	1193	Heating Unit Kit (wiring included) for Models with Green Lighted Contura Rocker Switch - 120 Volt Cord Set and 4 1/2" Water Line	\$ 81.50
	1194	Heating Unit Kit (wiring included) for Models with Green Lighted Contura Rocker Switch - 230 Volt Cord Set and 4 1/2" Water Line	\$ 81.50
19	0161B	Heating Unit Assembly (no wiring included) for Models with Green Lighted Rocker Switch - 120 Volt Cord Set and 4 1/2" Water Line	\$ 62.50
	0162B	Heating Unit Assembly (no wiring included) for Models with Green Lighted Contura Rocker Switch - 230 Volt Cord Set and 4 1/2" Water Line	\$ 62.50
20	0030	Brass 90 Degree Elbow Joint	\$ 2.50
21	1130	3/8" x 1/4" Straight Brass Fitting for Heating Element Housing	\$ 2.50
22	0187	Copper Tube(41/2" length) with Nuts and Compression Rings	\$ 4.00
23	0160	L-290 Thermostat	\$ 8.00
24	0195	Fusible Link Clamp	\$ 1.50
25	0151	Fusible Link Wire with Insulated Lug	\$ 3.00
26	1120	Bottom Plate with Casters	\$ 18.00
27	0011	Bottom Plate Casters (Set of 4)	\$ 6.50
28	0010	Screws for Bottom Plate (4 Screws Total)	\$ 0.75
ACCESSORIES			
29	1050	Jiffy Steamer Assembly Wrench	\$ 4.00
	0254	Metal Head/Wood Handle Hose Attachment Complete	\$ 70.00
	0256	Metal Head / Wood Handle Only	\$ 37.50
	0262	Wig Hose Attachment	\$ 50.00
	1062	Steam Cleaning "B" Brush Hose Attachment	\$ 50.00
	1063	Brush Only for the "B" Hose Attachment	\$ 8.00
	0898	Liquid Cleaner - 3 Ten (10) Ounce Bottles per Package*	\$ 15.00

*Not Available for Export

Jiffy® J-2000 Wiring Diagram



Jiffy® J-2000 Wiring Instructions

Please note switch terminal numbers 2, 3, 5 and 6 indicated on the enlarged switch diagram are marked on the actual switch. Jiffy® Steamers manufactured before May 2000 are not marked with the terminal switch numbers, but the terminal blades are in the same location.

1. Insert cordset into housing and connect white neutral wire from cordset bundle to terminal number 5 on the switch.
2. Connect blue wire from the right side of heating element to the right side of the L-290 thermostat.
3. Insert brass heating unit into housing and tighten with 2 mounting screws. Connect green ground wire (from cordset) to the nearer of the two mounting screws.
4. Connect black positive wire from cordset to plastic connector on orange fusible link wire.
5. Connect other end of orange fusible link to terminal number 2 on the switch.
6. Connect yellow wire from the left side of the thermostat to terminal number 3 on the switch.
7. Connect white wire from the left side of the heater unit to terminal number 6 on switch.
8. Insert one end of copper water line and compression ring into threaded fitting at bottom of brass heating unit and tighten nut with a $\frac{5}{8}$ " wrench.
9. Connect other end of water line with compression ring to 90 degree brass elbow at bottom of water cup and tighten with a $\frac{5}{8}$ " wrench. (Heating unit may be loosened and adjusted for a better fit if necessary.)
10. Set steamer upright and place black plastic strain relief approximately 4 $\frac{1}{2}$ " from end of cord and insert into housing using pliers.
11. Secure bottom plate with four screws.
12. To avoid leakage, be sure and tighten hose (or hat nozzle) with wrench before using steamer.